

# KING STREET

MANCHESTER

POP UP PARTICULARS



# WELCOME TO KING STREET



King Street's rich history and inspiring architecture has established it as a premium shopping destination within Manchester.

We are offering aspirational brands and local creatives the unique opportunity to pop up alongside fashion and art boutiques including Kiehl's, The White Company, Karen Millen, Jack Wills and Castle Fine Art.

**UNMISTAKABLY  
MANCHESTER.  
UNMISTAKABLY  
KING STREET.**



200,000

WEEKLY FOOTFALL<sup>1</sup>



HISTORIC

KING STREET  
IS HOME TO 14  
LISTED BUILDINGS



50,000+

VISITORS DURING  
KING STREET  
FESTIVAL WEEKEND<sup>2</sup>



50+

RETAIL BRANDS  
AND RESTURANTS



2.4 MILLION

SIGNIFICANT CATCHMENT  
POPULATION WITHIN A 20KM  
RADIUS OF CITY CENTRE



500,000

CITY'S RESIDENT  
POPULATION

<sup>1</sup> <https://cityco.com/report/city-centre-monthly-footfall-trends/>

<sup>2</sup> <https://cityco.com/news/king-street-festival-attracts-record-crowds-heart-manchester/>









## SPREAD THE WORD

We want your shop to be a success and will help promote your event on social media and connect you with other relevant brands on King Street.

You will also be expected to promote your shop on King Street and make it a real experience for visitors!

 KingStreetManchester



## LOCATION

58 King Street, M2 4LY

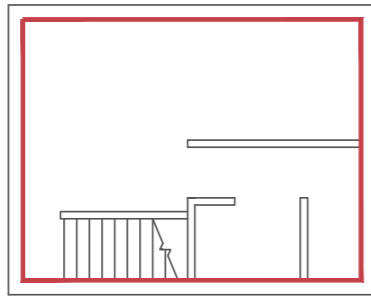
The property is situated in the prime pitch of the pedestrianised area of King Street and adjacent to Kiehl's and Diverso.

The venue is also whiteboxed, making it the perfect pop up venue.

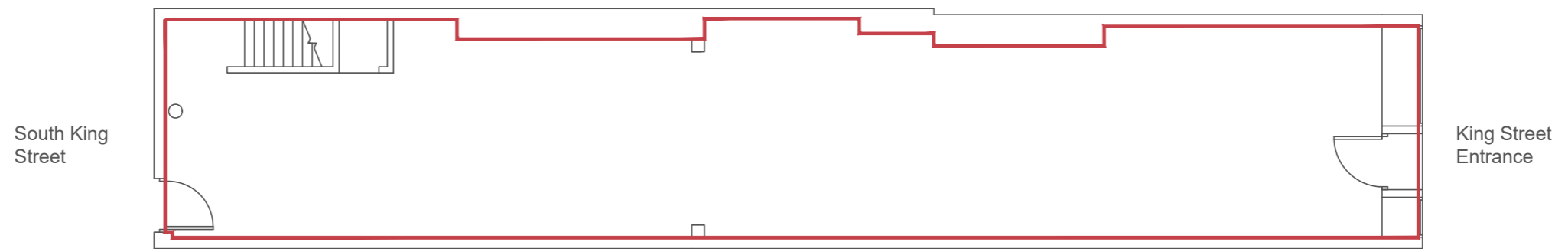
## ACCOMMODATION

The property is arranged over ground and basement floors and provides well-proportioned ground floor retail space behind an attractive shop front with the following approximate Net Internal floor areas:

Ground Floor	904 sq. ft.	(83.98 sq. m.)
Basement Floor	150 sq. ft.	(13.93 sq. m.)



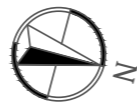
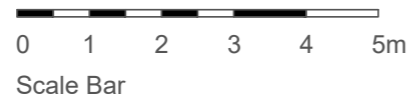
Basement Plan



South King Street

King Street Entrance

Ground Floor Plan



# UNIT 58 FLOOR PLAN

# GET IN TOUCH

If you have any questions please get in touch  
with Kate Chisnall at DS.Emotion

T. (0)20 3488 0499

E. [kate@dsemotion.com](mailto:kate@dsemotion.com)

## London

Thomas House  
84 Eccleston Square  
Victoria  
SW1V 1PX

+44 (0)203 488 0499  
[london@dsemotion.com](mailto:london@dsemotion.com)

## Leeds

One Brewery Wharf  
Waterloo Street  
Leeds  
LS10 1GX

+44 (0)113 223 7720  
[leeds@dsemotion.com](mailto:leeds@dsemotion.com)

## Manchester

Parsonage Chambers  
3 Parsonage  
Manchester  
M3 2HW

+44 (0)161 711 0630  
[manchester@dsemotion.com](mailto:manchester@dsemotion.com)

**DS.EMOTION**